

APA Risk Assessment

Base A, Port Lockroy

[DETAILS](#)

Shared 2026-04-29
Created 2026-03-15 22:02:55
Owner guest

Description

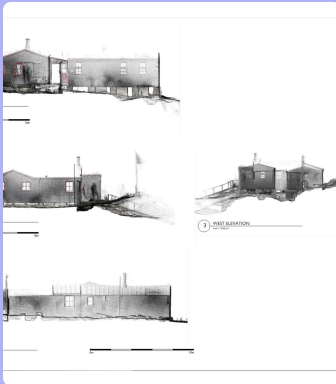
'Base A' at Port Lockroy, Goudier Island, off Wiencke Island, Antarctic Peninsula. Of historic importance as an Operation Tabarin base from 1944 and for scientific research, including the first measurements of the ionosphere, and the first recording of an atmospheric whistler, from Antarctica. Port Lockroy was a key monitoring site during the International Geophysical Year of 1957/58.

Risk Assessment Score

6.5

0 (Low)

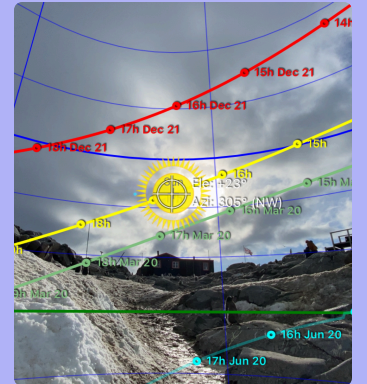
10 (Extreme)



Porth Lockroy Binder REV C IMG 4822red



IMG 4750red



DXLP7415

Risk Assessment Details

1 Is the valued part of the APA comprised of durable materials? **No**

3 Is the APA located on the Antarctic Peninsula, South Orkney Islands, or South Shetland Islands? **Yes**

2 Is the APA located in the Western Antarctic (i.e., west of the Transantarctic Mountains)? **Yes**

4 Is the APA located at a coastal site? **Yes**

5 Is the APA located 3m or less above sea level? **Yes**

6 Is the APA located within 100m of shoreline? **Yes**

7 Does the APA site have steep slopes (i.e., greater than 20%)? **Yes**

8 Is the APA situated on permafrost soils? **No**

9 Is the APA located north of the Antarctic Circle (66° 33' South)? **No**

10 Is the APA located north of 71° 33' South? **Yes**

11 Is the APA located north of 76° 33' South? **Yes**